



WORLD TRADE CENTER®
GRENOBLE
Centre de *congrès*



WTC GRENOBLE CONVENTION CENTER

GRENOBLE : METROPOLIS IN THE HEART OF FRENCH ALPS



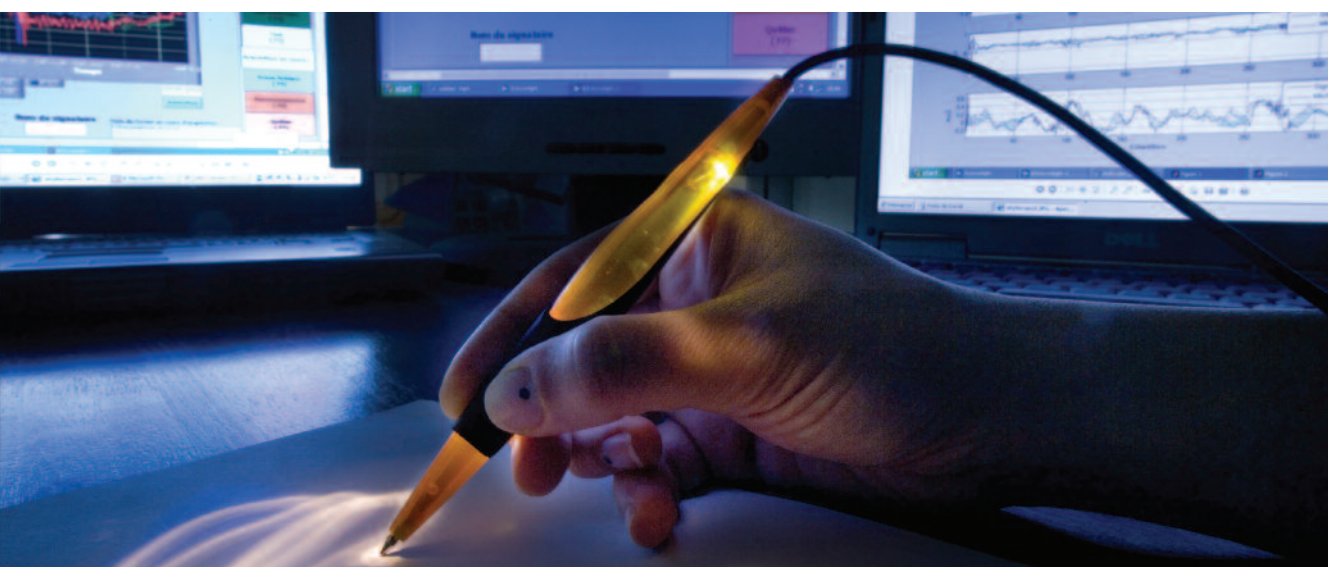
35 min from Grenoble-Isère airport
55 min from Lyon-Saint-Exupéry airport
2 h from Geneva airport



1 h 00 from Lyon
1 h 00 from Valence
2 h 00 from Geneva
2 h 30 from Marseille
3 h 00 from Paris



1 h 00 from Lyon
1 h 10 from Valence
1 h 40 from Geneva
3 h 00 from Marseille





GRENOBLE BENEFITS +

5TH RANK
*of the most **innovative** cities in the world**

AN ATTRACTIVE three-part system
University/Research/Industry

A LIVING ENVIRONMENT voted in
by executives and students

EXCEPTIONAL SITE
to discover
*Chartreuse cellars, Bastille fortress
and cable car*

22 SKI RESORTS
reachable *less than 1 hour*

**Forbes ranking*

THE CONVENTION CENTER, AN IDEAL LOCATION

CONVENTION CENTER BENEFITS +

1 MINUTE by foot from the train station and airport shuttles
(Grenoble - Lyon Saint-Exupéry - Geneva)

A STONE'S throw
from the science "Presqu'île"

2 TRAM lines
very nearby

1000 PARKING spaces

1 HOTEL into the WTC Grenoble building

+ THAN 5 000 HOTEL
rooms between 2 and 4 stars





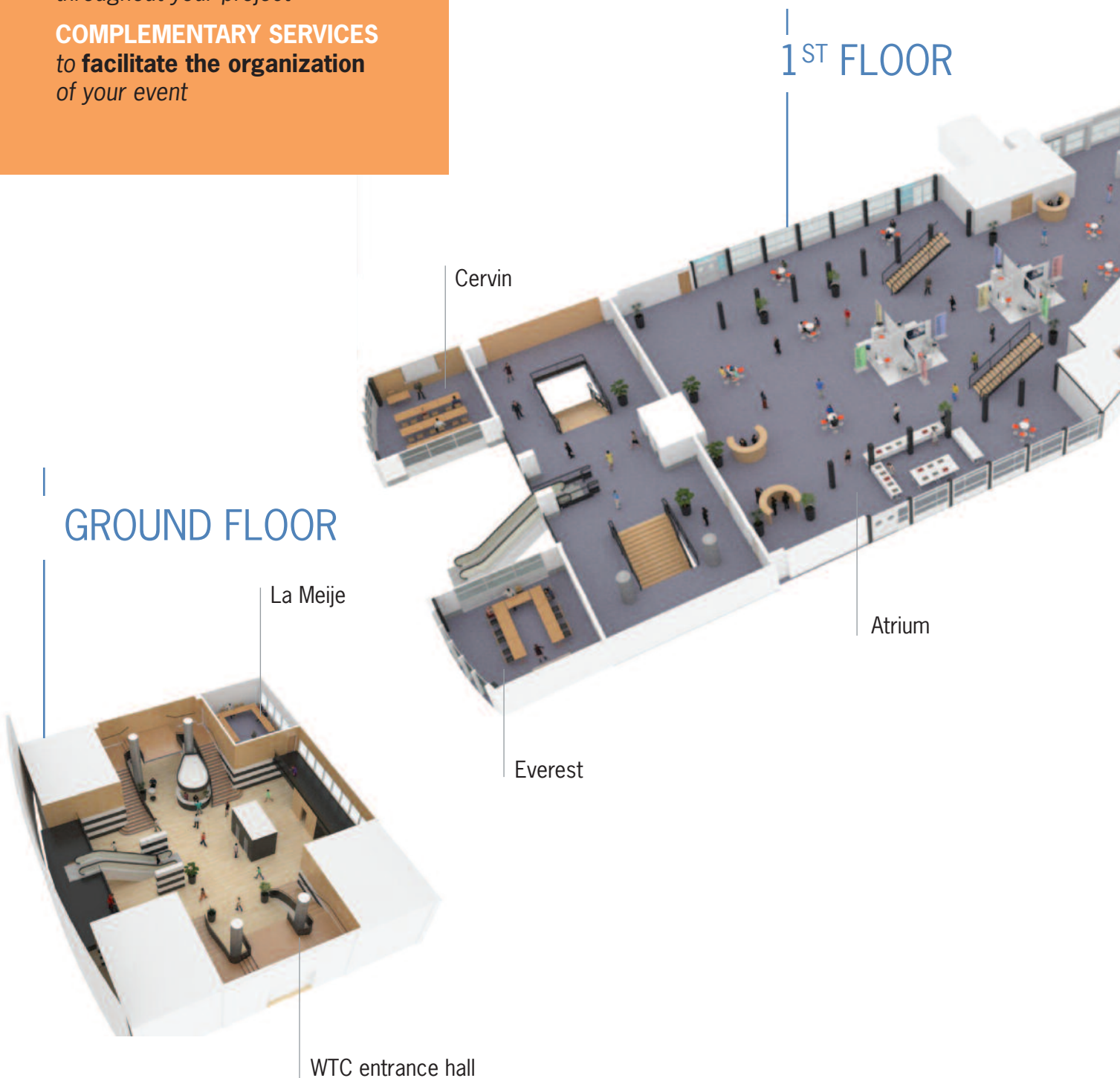
CONVENTION CENTER BENEFITS +

MODERN AND MODULAR
spaces

TOP OF THE RANGE
equipments

A TECHNICAL AND SALES
team at your service
throughout your project

COMPLEMENTARY SERVICES
to facilitate the organization
of your event



GROUND FLOOR

1ST FLOOR

Cervin

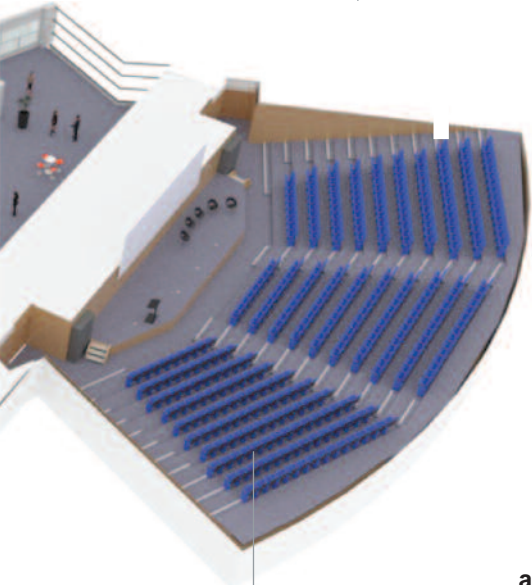
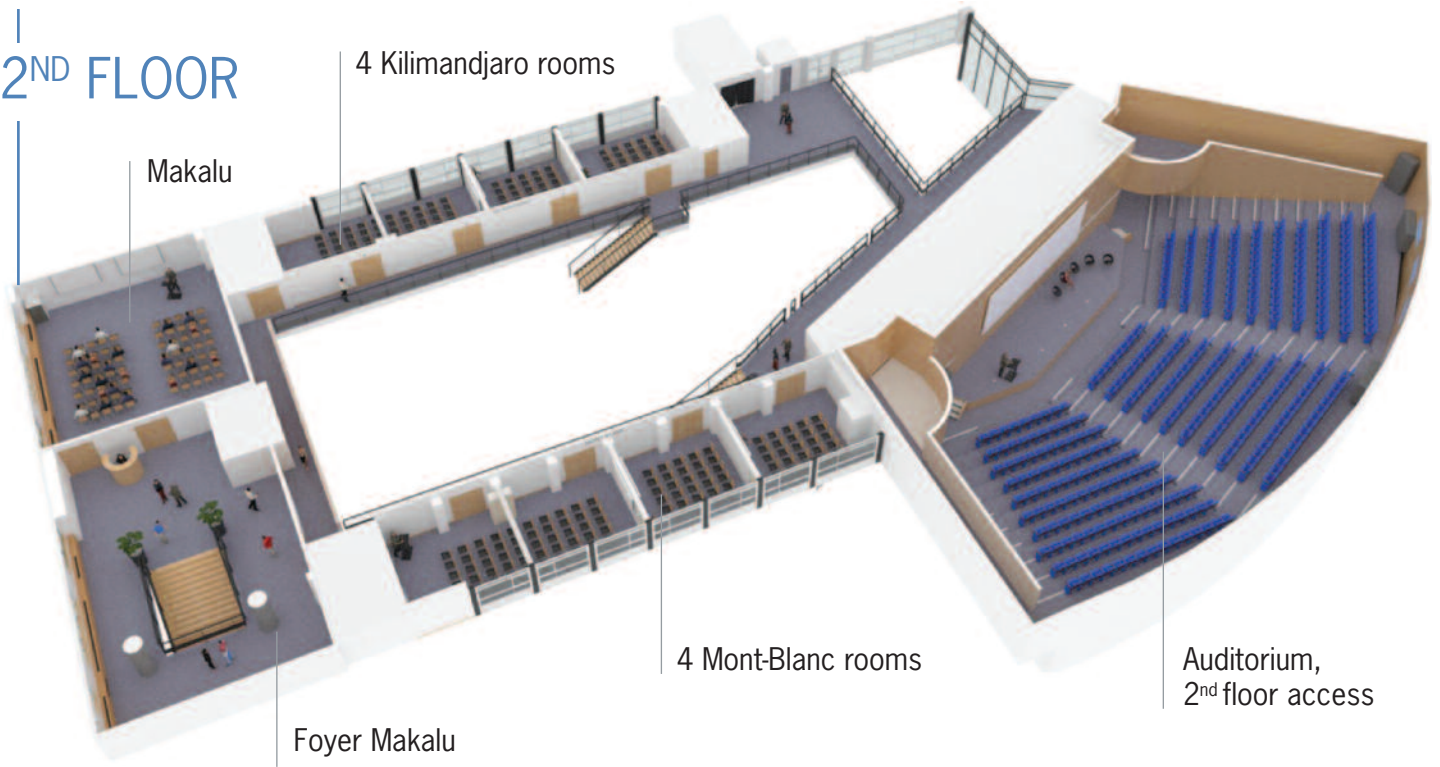
La Meije

Atrium

Everest

WTC entrance hall

2ND FLOOR



Surface area in m²








	Surface area in m ²	U-Shape	Classroom	Meeting	Cocktail	Catering	Exhibition
Ground floor							
La Meije	48	20	26	35	38		
1st floor							
Everest	50	24	30	42	40	40	
Cervin	50	24	30	42	40	40	
Auditorium	600			530			
Atrium	1 200			850	900	650	650
2nd floor							
Makalu	130	40	60	120	110	110	110
Foyer Makalu	110				40		
Mont-Blanc							
1 room	35	14	18	24	25	30	
2 rooms	70	25	40	60	55	55	50
3 rooms	105		68	90	80	80	70
4 rooms	140		94	120	100	100	100
Kilimandjaro							
1 room	35	14	18	24	25	30	
2 rooms	70	25	40	60	55	55	50
3 rooms	105		68	90	80	80	70
4 rooms	140		94	120	100	100	100

THE PLACE FOR ALL YOUR EVENTS





CONVENTION

CENTER

BENEFITS +

1 ATRIUM 1 200 m²

*daylight and direct access
to all the meeting rooms*

1 AUDITORIUM 530 seats

*equipped with high definition
video projection system*

12 EQUIPPED meeting rooms

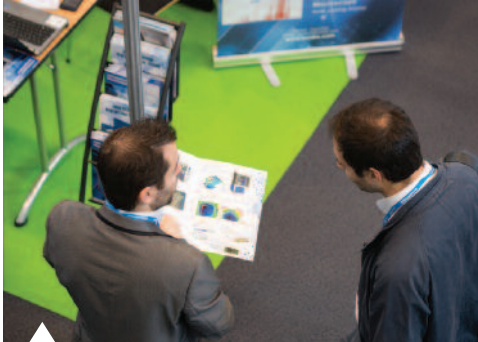
*including 8 modular,
from 10 to 120 people*



A COMPLETE

TAILOR-MADE SERVICES

OFFER



ADVICE

Viewing, help with layout of the spaces, floor plans, choice of rooms and equipments...



REGISTRATION

Registration management, reminder and confirmation campaign, on-line payment...



COMMUNICATION

Outward banner, signage screens in front of each room, roll-up, pennon...



EXHIBITION

Traditional, pop-up, tailor-made booth, individual meeting boxes, poster panels...



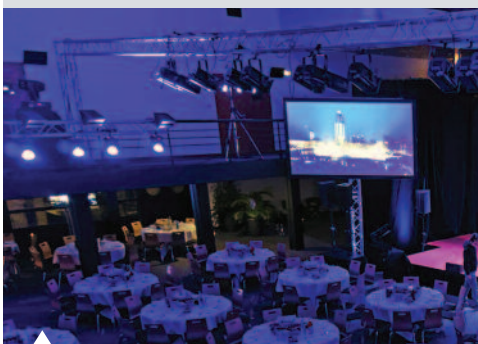
DECORATION

Staging of the plenary room, of your gala evening, furniture rental...



CATERING

Listed catering providers, chosen for their professionalism and experience



AUDIOVISUAL

Broadcast, video recording, streaming...



ENTERTAINMENT

Culinary, artistic, musical, cohesive activity, incentive, SMS live voting...



SERVICES ?

ASK OUR TEAM



THE WORLD TRADE CENTER (WTC) GRENOBLE

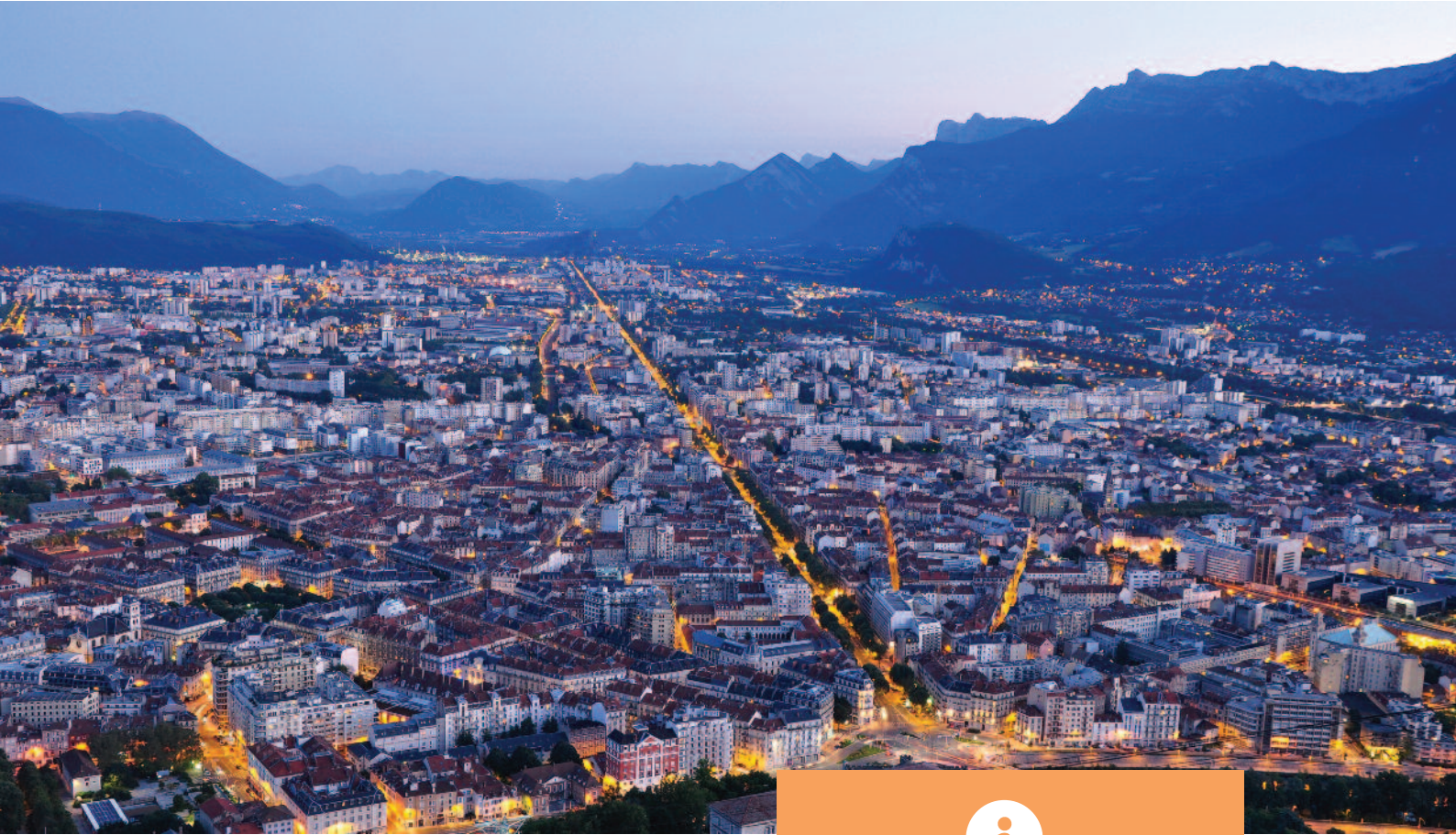
is a member of the World Trade Center Association since 1988. Its aim is to promote international trade, encouraging cooperation between its members (more than 330 World Trade Centers distributed in more than 90 countries all over the world) and their adherent companies.

The WTC Grenoble offers lots of services through its different structures : Convention center, International Trade Center (Grex), Business center and professional spaces.

WWW.WTC-GRENOBLE.COM



WORLD TRADE CENTER®
GRENOBLE
Centre de *congrès*



CENTRE DE CONGRÈS DU WTC GRENOBLE
5-7, place Robert Schuman - BP 1521
38025 Grenoble Cedex 1 - France

T +33 (0)4 76 28 28 80
congres@wtc-grenoble.com

WWW.CONGRES-WTCGRENOBLE.COM

La CCI de Grenoble adhère à EcoFolio pour le recyclage des papiers.
Maquette : service communication, CCI de Grenoble - Novembre 2016 - © Fotolia, © Pierre Jayet, © Pascal Michelet,
© Gilles Galoyer, © Studio jamais vu, ©Photo Christian Morel / www.christianmorel.net ©, © Franck Ardito,
© Insight Outside, © Résidences Hipark.



WORLD TRADE CENTERS®
ASSOCIATION



CCI GRENOBLE

